

We can praise God with many parts of our body. Look around the worship space to see how people are praising God.

Circle the ways you see people praising God.

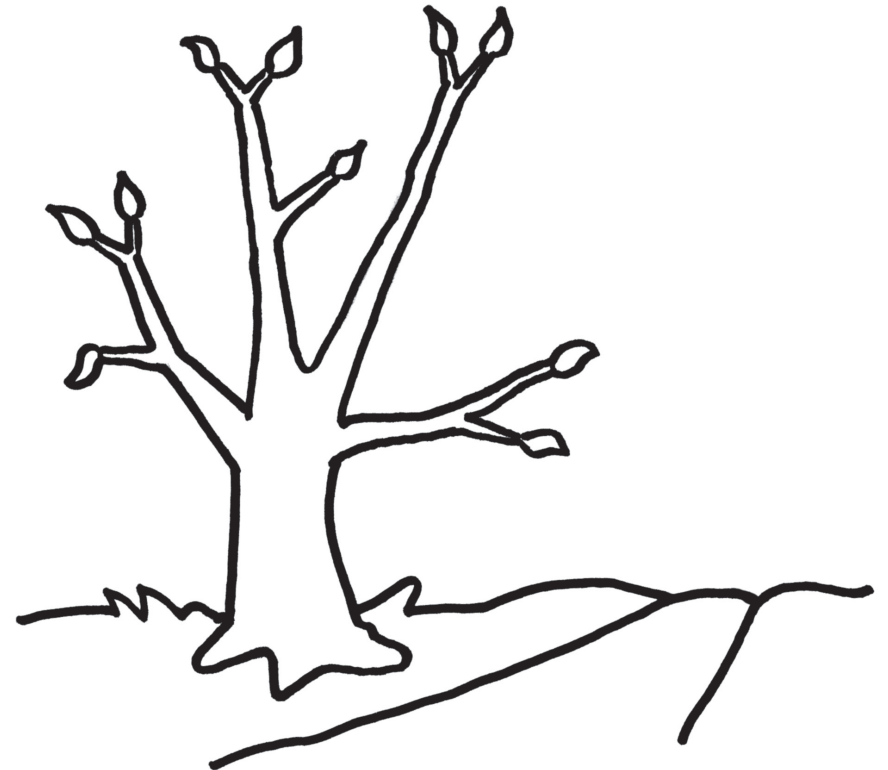


PRE-READER

Pentecost 16

- Today is the **16th Sunday** after Pentecost.
- A symbol of the season after Pentecost is a **tree**.
- The tree helps us remember to **care** for our faith so it will **grow big**.

Help this tree grow big by adding more branches and leaves.





Peter knew Jesus was the one God sent to save the world!

Peter was one of Jesus' friends. Who is one of your friends?

Draw him or her here.

MY FRIEND

Jesus tells us to take up our crosses. He also tells us something else.

Follow the dotted lines to see what else Jesus wants us to do.

